

Item# _____
Project: _____
Qty: _____

Back Bar Bottle Cooler

BB49-24



BB61-24



BB73-24



BB49-24G-HC



BB61-24G-HC



BB73-24G-HC



Features

- CFC Free Refrigerant and Foam
- Electronic Thermostat and Digital LED Temperature Display for Accurate Control and Easy Reading
- Self-Closing Door
- Magnetic Gasket can be Replaced without any Tools
- Stainless Top
- INTERIOR: Powder-Coated Steel White, Bottom S/S 304
- EXTERIOR: Powder-Coated Steel Black
- Unit ships with 5" casters, not installed

Two Year - Parts & Labor on entire unit. Valid in United States
Three Year - Additional Compressor, Part Only



Serv-Ware
www.servware.com

Phone:(800).768.5953

Revised 1/18

Fax:(800).976.1299



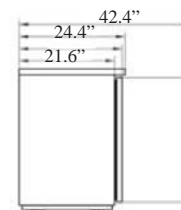
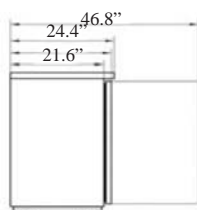
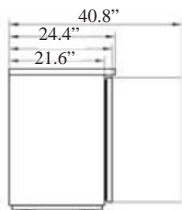
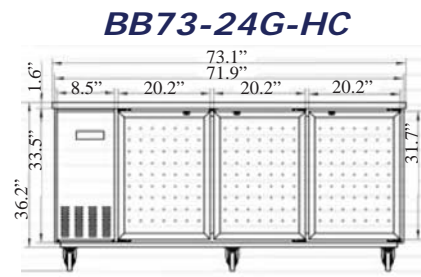
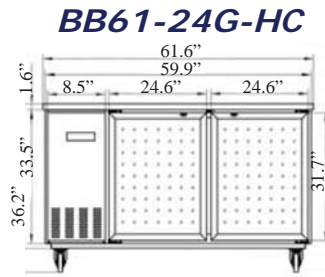
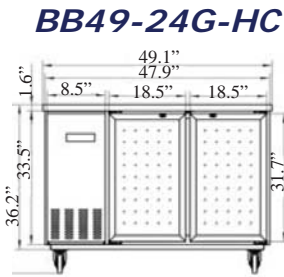
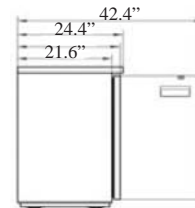
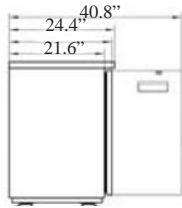
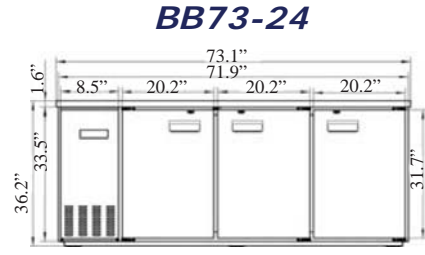
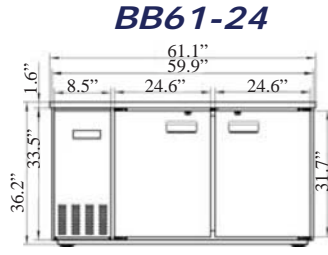
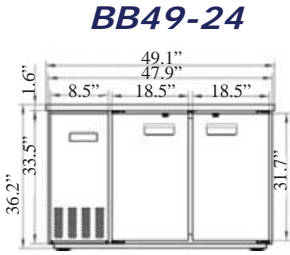
Certified to ANSI/NSF 7

Item# _____

Project: _____

Qty: _____

Back Bar Bottle Cooler



Serv-Ware

MODEL	EXTERNAL DIMENSION inch (W x D x H)	V/Hz/Ph	AMPS	STORAGE CAPACITY Cu-ft	CAPACITY 12 OZ. BOTTLE / CAN	HP	TEMPERATURE	CERTIFICATION	WEIGHT / LBS. (Shipping)
BB49-24	49.1" x 24.4" x 36.2"	115V/60Hz/1	4.5	10	9 ¼ CASES / 11 ½ CASES	3/8	33°F – 41°F	UL/cUL	262
BB61-24	61.1" x 24.4" x 36.2"	115V/60Hz/1	4.5	13.5	17 ½ CASES / 23 ¼ CASES	3/8	33°F – 41°F	UL/cUL	300
BB73-24	73.1" x 24.4" x 36.2"	115V/60Hz/1	6.0	17.2	25 ¼ CASES / 34 ¼ CASES	3/8	33°F – 41°F	UL/cUL	348
BB49-24G	49.1" x 24.4" x 36.2"	115V/60Hz/1	4.5	10	9 ¼ CASES / 11 ½ CASES	3/8	33°F – 41°F	UL/cUL	297
BB61-24G	61.1" x 24.4" x 36.2"	115V/60Hz/1	4.5	13.5	17 ½ CASES / 23 ¼ CASES	3/8	33°F – 41°F	UL/cUL	357
BB73-24G	73.1" x 24.4" x 36.2"	115V/60Hz/1	6.0	17.2	25 ¼ CASES / 34 ¼ CASES	3/8	33°F – 41°F	UL/cUL	416



Serv-Ware
www.servware.com

Phone: (800).768.5953

Revised 1/18

Fax: (800).976.1299



Certified to ANSI/NSF 7