

Item# \_\_\_\_\_  
Project: \_\_\_\_\_  
Qty: \_\_\_\_\_

# Ranges

**SGR-4**



**SGR-6**



**SGR-6-24**



## Features

- 30,000 BTU per open top burners with lift-off heads
- SGR-4 - 33,000 BTU oven capacity (19¾"D x 22"W x 13½"H)
- SGR-6 - 33,000 BTU oven capacity (26¼"D x 22"W x 14½"H)
- SGR-6-24 - 33,000 BTU oven capacity (26¼"D x 22"W x 14½"H)
- Oven thermostat adjusts from 200°F to 500°F
- Stainless steel front, back riser, lift-off high shelf
- Front edge is cool to the touch for safe cooking
- Steel U-style burner optimizes heat control & distribution
- 12" x 12" Cast top grates with aeration bowls
- Manual controls for ease of use
- One oven rack and three rack positions
- ¾" Rear gas connection and gas pressure regulator
- 6" Stainless steel adjustable legs

One Year - Parts & Labor on entire unit. Valid in United States



*Serv-Ware*  
[www.servware.com](http://www.servware.com)

Phone:(800).768.5953

Revised 6/17

Fax:(800).976.1299



SANITATION  
NSF / ANSI4



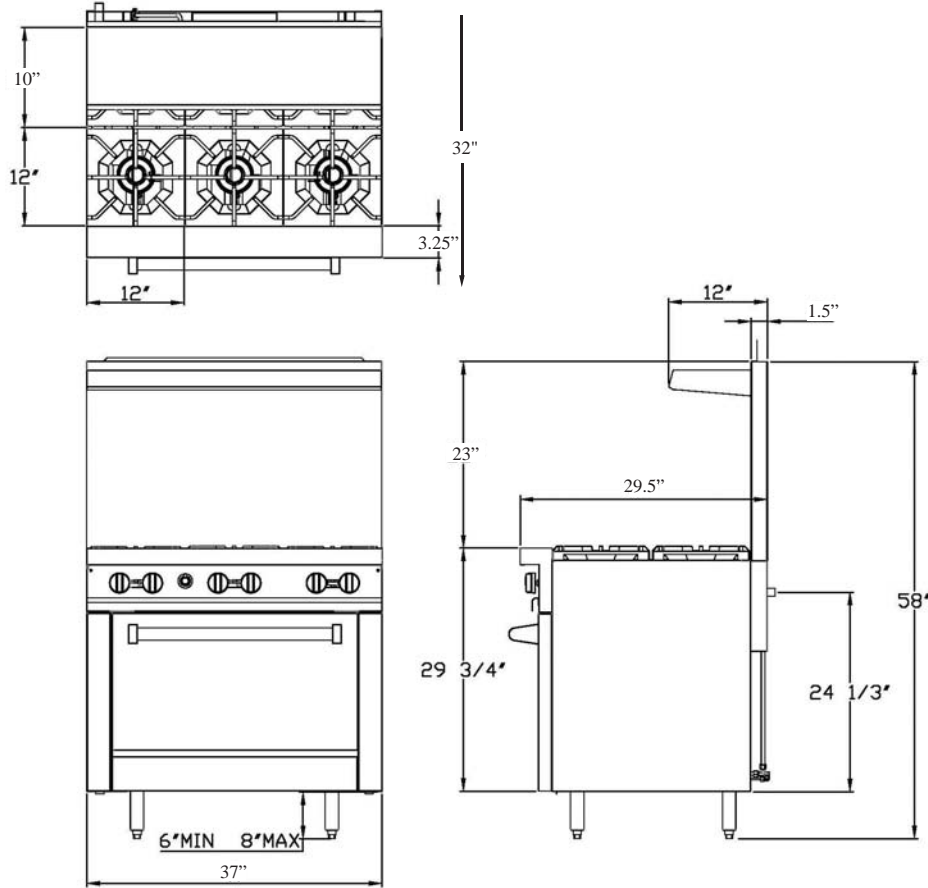
Serv-Ware

Item# \_\_\_\_\_

Project: \_\_\_\_\_

Qty: \_\_\_\_\_

# Ranges



Serv-Ware

<b>Model</b>	<b>Description</b>	<b>Dimensions</b> (W x D x H)	<b>Weight / lbs.</b> (Shipping)
SGR-4	4 Burner	24" x 32" x 58"	396
SGR-6	6 Burner	37" x 32" x 58"	465
SGR-6-24	6 Burner with 24" Griddle	63.5" x 36.6" x 58"	813



Serv-Ware  
[www.servware.com](http://www.servware.com)

Phone: (800).768.5953

Revised 6/17

Fax: (800).976.1299

